



FIRE SAFETY SERVICES
by Fire Service professionals



1 Review **2 Apply** **3 Comply**

We are soon moving towards the school Summer break, which is often a time that we are asked to conduct risk assessments, consultancy and other relevant services for educational establishments – with the minimum disruption to pupils.

It is a great time to ensure that your premises are a safe place for students and teachers alike.

ZONE 1 service base

Education: Fire Safety Arrangements

Fire Safety Arrangements are a key element in ensuring you are ready should the worst happen.

Fire Emergency Plans.

Fire Emergency Plans are implemented to ensure the most efficient and speedy evacuation of occupants from a building in the case of a fire or a suspected fire. These Plans must document effective procedures that will detail how the occupants of the building will be warned in case of fire, the roles and responsibilities of designated employees, summoning and meeting the fire and rescue service, details on escape routes and meeting points, as well as contingency plans.

Fire Evacuation Drills.

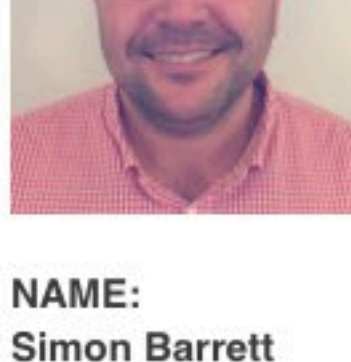
A minimum of two full Fire Evacuation Drills must be conducted each year, whereby all occupants follow the Fire Emergency Plans. The drills must be recorded in the Fire Log Book (please see Downloads and Docs for a free Fire Safety Log Book download) alongside the Fire Risk Assessment. If the Fire Service requests to come to your premises, these will be a key in providing evidence that they are legally compliant.

Adena Fire's consultants will come to your premises both to formulate tailored Fire Emergency Plans, as well as supervise your Fire Evacuation Drills. These activities can be done as a standalone service or may be linked with other services we provide such as Fire Risk Assessments and Fire Safety Training (which can include hands-on live fire training). We offer a package price for clients wishing to have either or both of the above services combined with a Fire Risk Assessment and/or Training, if conducted on the same day, at the same site.

Call us today on 0845 6432 999

ZONE 2 team focus

Some facts about Simon - Professional



Simon has almost ten years experience as an Assessor for Adena Fire, and has completed the PAS 79 course and App doc B/BS 9999 and proficient in both protocols.

He is frequently called upon to assist clients in cases where the Local Fire Authority have carried out an audit, and consequently served an Enforcement Notice.

He has been in the British Fire and Rescue Service for 18 years, and is currently serving as a temporary Station Officer. He also spent two years at the Fire Service Training Centre as an instructor responsible for training new recruits.

NAME:
Simon Barrett

Simon spent nine years in the Royal Engineers as a Plant Operator Mechanic, including active service in the Gulf and Bosnia.

TITLE:
Fire Safety Consultant

Some facts about Simon - Personal

Married to Jo, with two children Charlie and Evie.

Interests are playing and watching various sports and going to gigs. He's also a lifelong West Ham fan.

"I have been carrying out FRA's for nearly 10 years which have ranged from small office units larger, more complex premises.

I also deliver fire safety and fire warden training which I find very rewarding, including providing persons with the skills to extinguish fires with fire extinguishers and the aid of a live fire simulator."

ZONE 3 consequences

There are always consequences...

Let's start with some of the facts ...

During the period that we have been conducting research for this edition of our Newsletter, we have been shocked at the scale, frequency and devastation that fires in educational premises occur.

In a news report in 2012, the London Fire Brigade reported that there was 'one fire every three days in the Capital's schools, colleges and nurseries – the equivalent of one fire for nearly every school day. Fire chiefs said that these statistics should serve as a stark reminder of why sprinklers need to be installed in education buildings. In this report, it was noted that there were 36 arson attacks on London's schools, colleges and nursery buildings, and a further 113 accidental fires.

But before you think that this is a problem specific to London, think again.

A far-reaching report published in 2007 - 'the impact of school fires – a study of the wider economic and social impact on schools and the local community' (by the National Foundation for Educational Research (NFER), Local Government Association (LGA) and the British Automatic Fire Sprinkler Association (BAFSA)) – showed that school fires are a **national problem**.

And in 2016 Christine Blower (General Secretary of the NUT) also gave a presentation on her concerns about school fires.

Here are some of the (very frightening) facts:

- Each year in the UK there are estimated to be around 1,000 fires a year in schools alone – this shows a downward trend, however, it is far too early to be complacent
- The main causes of fires are: arson (thought to be around 70%), electrical faults and accidental
- Nearly a third of all school fires start in school time – around 90,000 children have had their education disrupted by school arson every year, with some never opening again
- Fire, smoke and destruction to property can take vast amounts of money and time to rebuild
- The emotional impact on everyone concerned, including of course the children, can take a long time to get over
- If a school is found not to have an up-to-date fire safety strategy in place, insurance is likely to be invalidated and prosecutions of key school personnel - with around £100 million of direct losses per year

So much can be done to help prevent fire ruining the future of your school. If you need any further persuasion to make fire safety one of your top priorities, we recommend you read on.

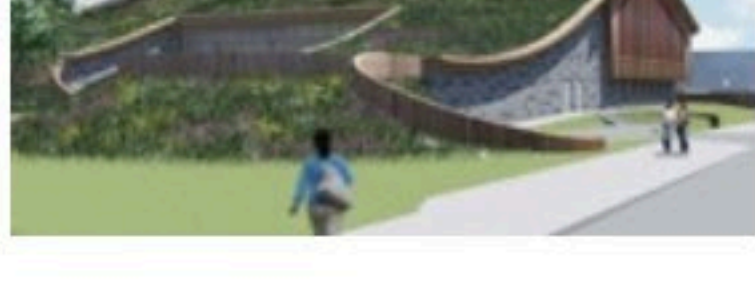
September 2014 – University of Nottingham

A fire that destroyed an unfinished University of Nottingham laboratory was most likely caused by an electrical fault, the fire service has said.

The £20m wooden-framed GlaxoSmithKline building, on the Jubilee Campus in Radford, burnt down in September 2014. The report said there were no fire doors or windows, allowing the blaze to spread with "ferocity". The university said it was satisfied its contractors met its health and safety requirements.

Nottinghamshire Fire and Rescue deputy chief officer Wayne Bowcock's report said the fire started because of a fault with the temporary power supply to the building, which was about 70% complete. "Without fire doors or in some areas glazing, there were open voids between floors," it said.

"This caused the building to be self-ventilating and once the fire had taken hold it then passed through the building rapidly and with some ferocity."



1st January, 2016 - Coed Eva primary school in Gwent

Huge fire tears through primary school as more than 50 rescue workers battle flames

An investigation was launched after a large fire tore through a primary school in the early hours of New Year's Day. More than 50 firemen and women were called to deal with the blaze at the infants' section of Coed Eva Primary School in Cwmbran, South Wales.

The alarm was raised just before 2.30am and the first crew on the scene called for back-up to deal with what South Wales Fire and Rescue Service described as a "rapidly developing" fire.

TWO men have since been arrested on suspicion of arson after the Coed Eva Primary School fire.

The Cwmbran school has been closed for the whole of this week and is hoping to reopen next Monday, with pupils relocated to temporary portable classrooms.

The building, which housed the nursery and infant school classrooms at Coed Eva Primary School, was completely destroyed in the fire. It has been predicted that it could take two years to rebuild.

ZONE 4 advice

Steve Neeves, Director at Elecheck, talks about electrical systems & equipment failure as a cause of fire

It is a fact that significant causes of property fires are due to the of failure in the electrical systems or electrical equipment. Notable high profile cases include the Bury St Edmunds food factory fire which lead to a £63million insurance claim in 2004 and, of course, Windsor Castle which alone cost a then, staggering £35m in the early 90's. Of course much greater cost is the loss of life which a regrettable consequence of so many domestic and industrial fires.

In the light of this fact, it is no surprise that the Electricity at Work Regulations introduced in 1989 put an onus on 'Duty Holders' to ensure that – "all systems and equipment are installed and maintained so as to prevent, so far as reasonably practicable danger." This places a very clear duty on all organisations to have a very robust policy and implementation plan for ensuring their premises, working environment and working practices are safe for all occupants and visitors.

Given the nature of electrical systems and equipment, the most appropriate way of ensuring the safety of each is to undertake a detailed visual inspection and to test the integrity of the insulation and path to earth. As a consequence, the inspection and testing of portable electrical equipment (PAT) and the Electrical Installation Condition Report (EICR) have become the industry standard.

Whilst the HSE and other authorities give some guidance as to the suitable frequency of testing, it is for each organisation to undertake a 'Risk Assessment' in order to establish an appropriate programme of electrical safety testing. Depending on the level of risk, PAT is undertaken between 3 months and 2 years generally and EICR between 1 year and 5 years. Property insurers and premises licensing authorities, where relevant, may have an influence on frequency of testing and scope of work.

Elecheck (EST) Ltd have been providing a comprehensive electrical safety testing service since 1993. Services include PAT, EICR and thermographic surveys, all essential in ensuring compliance with the Electricity at Work Regulations 1989. Work is undertaken by fully qualified engineers to City & Guilds 2377/2391/2394&5 throughout the UK across all manner of premises including Education, Commercial, Industrial, Health and Social Housing. As part of the service, the company offers free initial surveys in order to produce a fully costed proposal in accordance with industry recommendations.

Contact: Steve Neeves, Sales Director Elecheck Phone: 01223 506506 Website: www.elecheck.co.uk

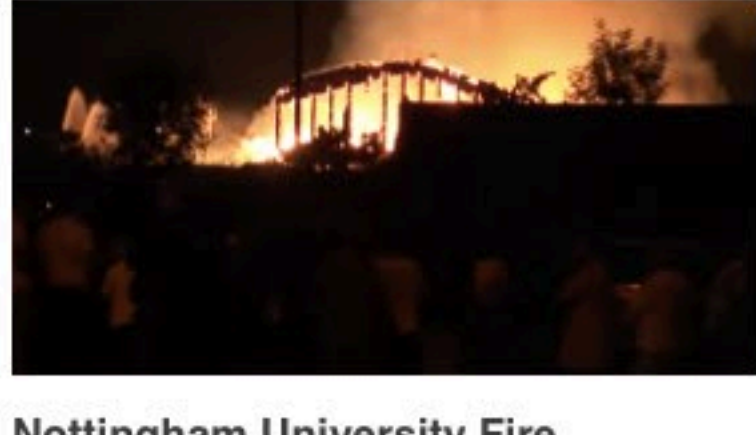
ZONE 5 downloads and docs

FIRE SAFETY LOG BOOK [DOWNLOAD](#)

Fire Safety Log Book

A Log Book is required to note and detail the testing and maintenance of your fire safety practices, and is reviewed by the Local Authority Fire Service.

[DOWNLOAD](#)



Nottingham University Fire

This clip from the 2014 fire at Nottingham University which was described as 'a "significant" blaze' which destroyed the multi-million pound chemistry building.

[WATCH NOW](#)

FIRE SAFETY LAW SUMMARISED [DOWNLOAD](#)

The Regulatory Reform (Fire Safety) Order 2005

This normally complex document has been produced in a simple to understand summary version for you to download.

[DOWNLOAD](#)

BAFSA RECOMMENDATIONS [DOWNLOAD](#)

Sprinklers in Schools – Information File

This document from the British Automatic Fire Sprinkler Association Ltd outlines recommendations for sprinklers in schools.

[DOWNLOAD](#)

FIA GUIDANCE [DOWNLOAD](#)

FIA Guidance - Education Premises

This normally complex document has been produced in a simple to understand summary version for you to download.

[DOWNLOAD](#)

SPRINKLERS IN SCHOOLS [DOWNLOAD](#)

The importance of sprinklers in schools

Christine Blower, General Secretary of the NUT gives a presentation of the importance of sprinkler systems in schools and why every school should have one.

[DOWNLOAD](#)

ARSON RISK ASSESSMENT [DOWNLOAD](#)

Arson Risk Assessment - Schools

Merseyside Police & Merseyside Fire & Rescue have collaborated to publish this document on Arson Risk Assessments in schools.

[DOWNLOAD](#)

ZONE 6 in our opinion...

Educational Establishments Have A Duty Of Care To Pupils

From nursery to college and university, our children are in the care of our educational establishments for much of their early years – so can we be sure that they are safe?

With the increased pressures on budgets and resources, these establishments, it's hardly surprising that some may not have fire safety at the top of their priorities. However, fire safety legislation (Regulatory Reform Order [Fire Safety] 2005), requires that all schools and other educators must hold a current fire risk assessment, which is focused on 'life' safety.

Aside from risk' members of our communities, and in the case of a fire, a clear strategy for ensuring that the children, staff and visitors are evacuated safely, is of paramount importance.

But of course, prevention is always preferable. It seems that by ensuring that fire safety arrangements are in place, sprinkler systems and regular electrical checks go a long way. Finally, but probably the most difficult to plan against is arson – still the greatest risk. In the Arson Risk Assessment in Schools document, in our Downloads and Docs Zone 5, Merseyside Fire and Rescue and Merseyside Police have collaborated to give some excellent advice.

ZONE 7 what our clients say...

"I would like to thank you for the excellent way in which you carried out our Fire Marshal training. Those Prestolite employees who attended the course have asked me to write to you to inform you that they all found the instructor was very well informed and the session was both interesting and informative."

It is important for us to constantly revive interest amongst our work force on all aspects of fire safety in the workplace. In view of this we look forward to you continuing to carry out our Fire Safety training and Fire Risk Assessments."

Mervyn Dolan, Presolite Electric Ltd

ZONE 8 our accreditations...



[Follow this link to safely unsubscribe](#)

